

# Memory Matching Game: WordFriends™

If available, use card stock to print the memory cards twice. If you have the option to print double sided, we've provided templates for the back side of the cards. If you do not have the option and would like sturdier cards, you can glue the card pages onto cardboard. Once the glue has dried, cut along the dotted lines. You should have 48 cards in all. Mix the cards up and then lay them face down.

The first player turns over two cards. If they are both a matching pair, the player gets to go again. If the 2 cards do not match, place the cards face down with the others. Now it's the next player's turn. Take turns until all the cards have been paired up. Whoever collects the most matching pairs is the winner!





DOG



DUCK



BEAR



PIG



FROG



SHEEP



DOG



DUCK



BEAR



PIG



FROG

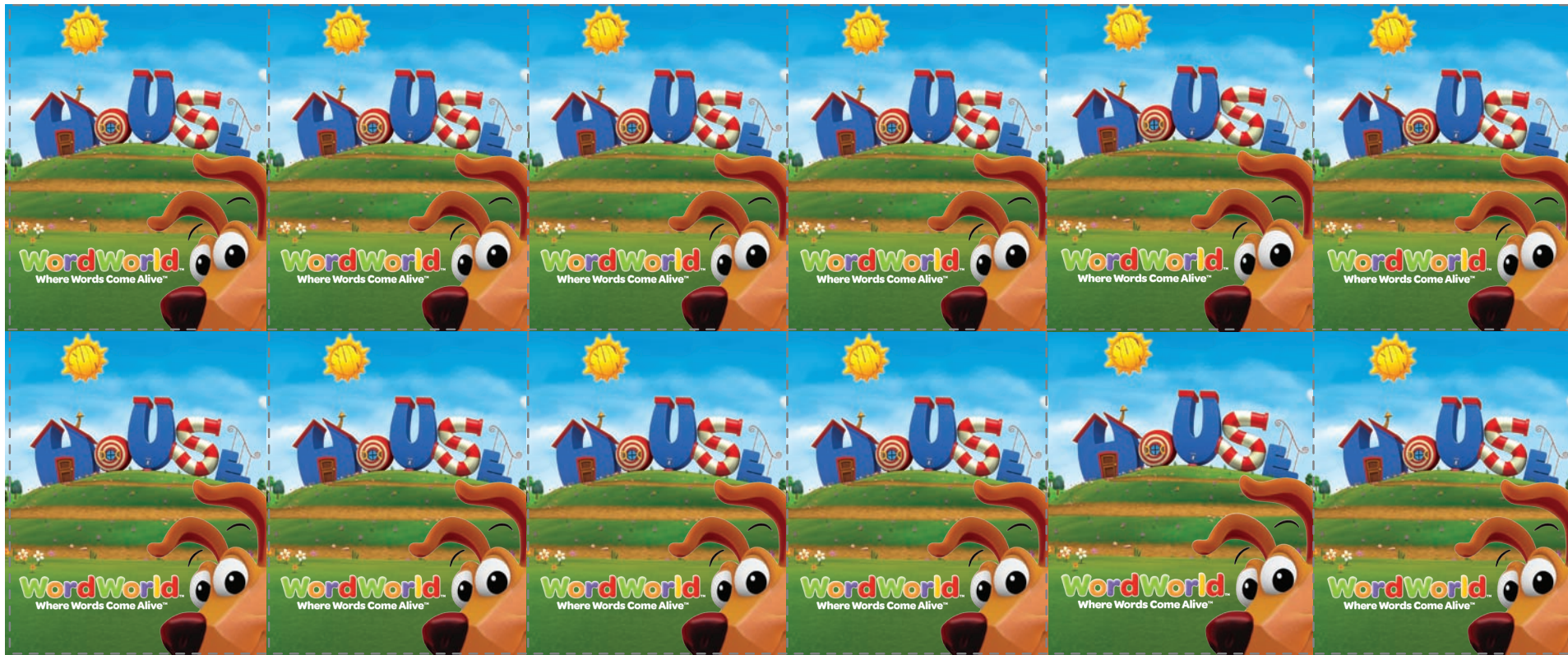


SHEEP



wordworld™  
visit us at: [pbskids.org/wordworld](http://pbskids.org/wordworld)





**WordWorld**<sup>™</sup>  
visit us at: [pbskids.org/WordWorld](http://pbskids.org/WordWorld)

